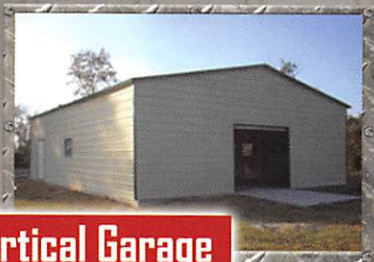




**RV Cover**

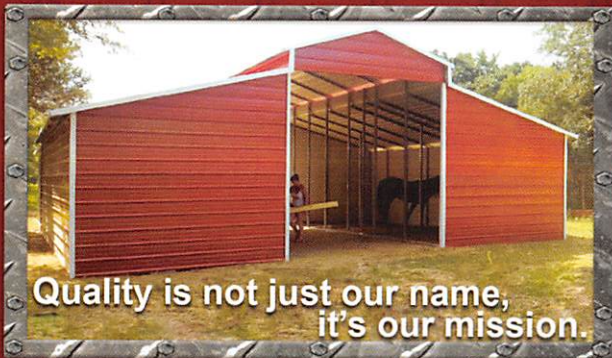


**30x40 Vertical Garage**



**Standard Carport**

Visit our Website at:  
[www.qualityoutdoor.net](http://www.qualityoutdoor.net)



Quality is not just our name,  
it's our mission.

## Color Choices

11 COLORS TO CHOOSE FROM



19 UPGRADED 40 YEAR COLORS



ALSO AVAILABLE  
IN 26 GA  
LIMITED  
COLORS

Color swatches are approximate and  
may vary from actual material.

Contact your dealer for details:

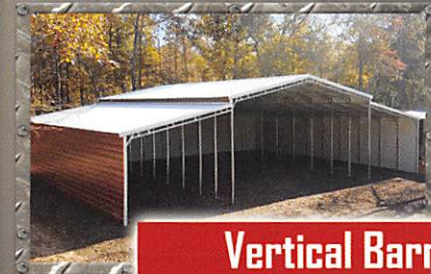


**QUALITY**  
OUTDOOR PRODUCTS

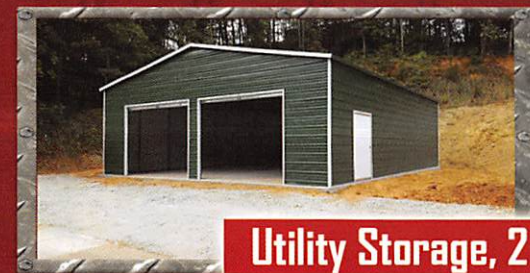
**RENT  
TO  
OWN**



**Carport**

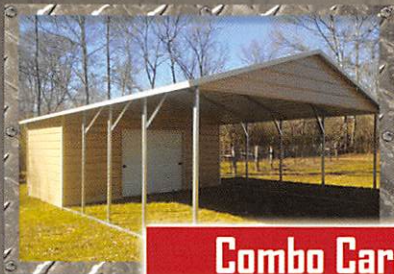


**Vertical Barn**



**Utility Storage, 2 Bay**





**Combo Carport**

# QUALITY

OUTDOOR PRODUCTS

## WHY CHOOSE QUALITY?



**40' x 50' Vertical Roof**



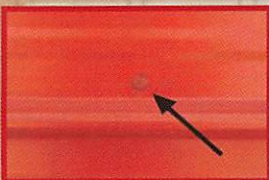
**70% More Anchors**



**Factory Trained Installers**



**Side-Entry Garage**



**Painted screws to match color of building**



**Welded Supports on all buildings 20' and wider**



**Stronger construction (barns with welded supports)**



**Engineered 30', 40' & 50' Wide (buildings with welded truss)**



**Flat Top**

**CERTIFIED BUILDINGS**

**120 M.P.H.**

**(2012 IBC)**



**ASK ABOUT OUR CERTIFIED BUILDINGS!**

**CERTIFIED BUILDINGS**

**140 M.P.H.**

**(2012 IBC)**



**CONDENSTOP**  
**NO MORE DRIPS FROM CONDENSATION**

